



Item No. \_\_\_\_\_

Project \_\_\_\_\_

Quantity \_\_\_\_\_

## Electric, Counter Model Griddles **Model: 124,136,148,160,172 [T,TC,S,SC]**



Model 172S shown

### SIZING AND PERFORMANCE GUIDE

Model/Width	Surface Area	Controls	kW Input*
<input type="checkbox"/> 124"	552 sq. in.	2	12-kW
<input type="checkbox"/> 136"	828 sq. in.	3	18-kW
<input type="checkbox"/> 148"	1104 sq. in.	4	24-kW
<input type="checkbox"/> 160"	1380 sq. in.	5	30-kW**
<input type="checkbox"/> 172"	1656 sq. in.	6	36-kW**

\* 6-kW per foot of griddle

\*\* Total power input, two power connections required

### SHORT/BID SPECIFICATION

Griddle shall be a **LANG Manufacturing Model 124, 136, 148, 160, 172** with:  standard ACCU-TEMP Snap-action Thermostat Controls or  SELECTRONIC Solid State Controls [S], for every 12" of griddle width; 6-kW per foot of Incoloy sheathed heating elements, pressure clamped to plate bottom; 1" thick polished cooking surface, with 5-1/2" high side and back splash and full front 1" deep X 3-1/2" wide grease trough; and all the features listed and the options/accessories checked:

### STANDARD PRODUCT WARRANTY

One year, parts & labor

### CONSTRUCTION FEATURES

- 1" thick precision machined, polished steel cooking surface
- Continuously bottom welded 5-1/2" high rear & side splash shields
- Full front 3-1/2" wide X 1" deep stainless steel grease trough
- 8 quart capacity grease drawer, with removable fully enclosed sleeve
- All stainless steel base cabinet construction
- 4" adjustable legs provided [Stand option available]

### PERFORMANCE FEATURES

- Choice of two control systems [See below]
- Thick griddle plate reduces hot & cold spots and retains heat
- Highly polished surface and continuously welded splash and grease trough speed cleanup
- Heating elements Incoloy sheathed for long life
- Elements are pressure clamped to bottom of griddle plate for more even heating
- Recessed control panel protects control knobs
- Accurate temperature control between 175° and 550°F

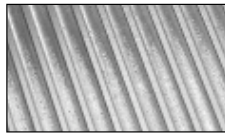
### CONTROL PACKAGE [Specify One]

#### ACCU-TEMP™ Thermostat Controls [Standard]

- Snap-action thermostats
- Independent temperature control every 12"
- Power-to-element pilot lights for each control

#### SELECTRONIC™ Solid State Controls [-S]

- Area sensitive Resistance Temperature Detector system
- RTD probe reacts to a 1°F temperature change
- Control for every 12" of cook surface
- 175° to 550°F temperature control, in 25° increments



### FOCUS OPTION

Custom Grooving [Specified in 12" increments, from left to right. 24" maximum, from either side.]



Sheet No. LSP-GD2 (rev. 02/09)

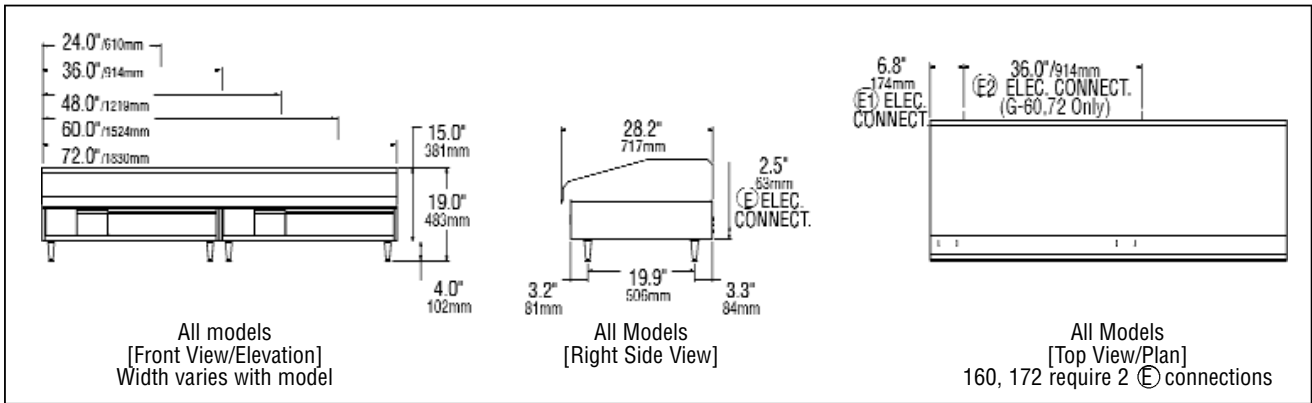
# Electric, Counter Model Griddles Model: 124, 136, 148, 160, 172 [T,TC,S,SC]

## INSTALLATION REQUIREMENTS

- (E) 208V, 3-phase, field convertible to 240V or 1-phase; or 408V, 3-phase power connection
- (E1) (E2) Two electric connections required for 60" & for 72" wide units
- Installation under approved vent hood required.  
[Connections from rear. See other below for location and power requirements]

## OPTIONS & ACCESSORIES

- Custom Grooving [Specified in 12" increments, from left to right. 24" maximum, from either side.]
- Top-welded – adds a continuous weld around inside splash perimeter
- Stainless steel tubular-leg stand with undershelf & adjustable feet
- Stainless steel tubular-leg stand with undershelf & casters



Model	Height x Width x Depth (Not including legs)	Clearance from combustible surface	Weight		Freight Class
			Actual	Shipping	
124	15.0" x 24.0" x 28.2" 381mm x 610mm x 717mm	Sides: 2" Back: 2"	243 lbs. 110 kg	280 lbs. 127 kg	85
136	15.0" x 36.0" x 28.2" 381mm x 914mm x 717mm		368 lbs. 167 kg	410 lbs. 186 kg	85
148	15.0" x 48.0" x 28.2" 381mm x 1219mm x 717mm		483 lbs. 220 kg	515 lbs. 234 kg	85
160	15.0" x 60" x 28.2" 381mm x 1524mm x 717mm		621 lbs. 282 kg	665 lbs. 302 kg	85
172	15.0" x 72.0" x 28.2" 381mm x 1830mm x 717mm		724 lbs. 329 kg	800 lbs. 364 kg	85

Model	Total kW	Maximum AMP Per Line				
		208V/3-Phase	240V/3-Phase	408V/3-Phase	208V/1-Phase	240V/1-Phase
124	12.0	50.0	43.3	21.7	57.7	50.0
136	18.0	50.0	43.3	21.7	86.5	75.0
148	24.0	75.0	65.0	32.5	115.2	100.0
160	30.0 [12/18]*	50.0	43.3	21.7	86.5	75.0
172	36.0 [18/18]*	50.0	43.3	21.7	86.5	75.0

\* Load split for the two power connections required.

## CAD SYMBOLS & PRICING



Due to continuous improvements, specifications subject to change without notice.



Sheet No. LSP-GD2 (rev. 02/09)

LANG MANUFACTURING - A DIVISION OF STAR MANUFACTURING INT'L, INC. • 10 SUNNEN DR. ST. LOUIS, MO 63143  
TOLL FREE: 800.264-7827 • FAX: 314-781-3636 • www.langworld.com